

RF-X1 Retro Fit Pool Light

Installation and Operation manual

trueblueleisure.com.au

Product Code: EMX-30-91015

Keep this Manual for future reference

WARNING

Please read the manual carefully before commencing installation. This manual contains important information about the correct installation and operation of RF-X1 lights.

— Attention!

- Only a qualified electrician is allowed to carry out the installation of this product.
- Avoid direct contact with electrical power.
- Respect all regulations in effect for preventing accidents.
- All units are required to be disconnected from the mains electricity before any maintenance.
- For safe and proper installation, ensure that parts supplied with the product are used.
- Never handle with wet hands and feet.
- This unit is design for use only when fully submerged in fresh water, connecting safely with transformer
- This product should be installed according to your local electrical installation ordinances and regulations.
- Due to the corrosive nature of unbalanced pool chemicals, please keep you pool water acid-base balanced correctly to ensure the longevity of the lights.
- If the external flexible cable or cord of this light is damaged, it shall be exclusively replaced by the manufacturer or their service agent or a similar qualified person in order to avoid hazards.

— Use

- Check that there is enough cable behind light to allow for servicing above water, preferably at ground-level pool-side.
- Never operate this Underwater Light for more than 1 minute unless it is totally submerged in water.
- If your lights require cleaning at any time, be sure to use a mild detergent to avoid damage to the lights.
- Be sure power is off before installing or removing LED plate. Allow LED plate to cool before replacing.
- Maximum depth for Light installation at 1.2 meters.
- Maximum water temperature range for light operation 0 - 25°C

- For type X attachments

If the external flexible cable or cord of this light is damaged, it shall be replaced with a cable exclusively available from the manufacturer or their service agent.

PRODUCT DESCRIPTION

— SPECIFICATION

Electrical Specification :

1) Standard Voltage : AC 12-32V (COS Φ :0.8 , 2.1A)

2) Frequency : 50/60Hz

3) Power : 25W

4) Mode of operation : ON/OFF Mode or Prism control box

— COLOUR CHANGE

NO.	Mode	NO.	Mode
1	Cool White	9	Mode C: Blue+Gradual Green
2	Green	10	Mode D: RGB Colour Sequence
3	Blue	11	Mode E: RGB Colour Sequence
4	Green+Blue	12	Mode F: Auto Colour Change
5	Red+Green	13	Mode G: RGB Colour Sequence
6	Red+Green+Blue	14	Mode H: Rapid Auto Colour Change
7	Mode A: Blue+ Gradual Red	15	Warm White
8	Mode B: Green+Gradual Red		

CONTROL

- 1) When the light is connected to the transformer directly, the on / off switch controls the colour changes (Linking a light with a transformer and an on/off switch is recommended; If you want all the lights to change colour at the same time, install a master switch, Figure 1).
- 2) If applicable, when the light is connected to the transformer and the transformer to the optional Prism control box, the control panel on the control box and its remote control controls the colour changes (See the Control Box Manual for details).

Attention: Control the light with ON/OFF mode and control mode (Prism). The light auto detects Prism control box. When light's connected to Prism Control Box, you can choose a particular colour and adjust light brightness with a Prism remote.

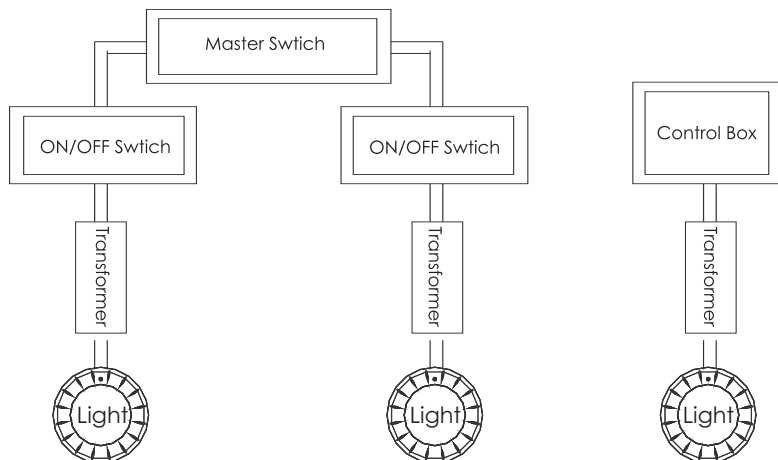


Figure 1

INSTALLATION NOTES

- 1) The light retrofits. You should follow the procedures closely when installing the light.
- 2) It is recommended to install a light every 20m², the approximate exposure area of each unit.
- 3) The lights should be installed in a direction where they will not shine directly into the house.
- 4) For training or competition pools, the lights must be installed on the sides in order to prevent swimmers from seeing any glare.
- 5) Nothing should be placed on the poolside directly above the lights for ease of maintenance.
- 6) If the wires are connected inside the lights, you must seal the connections with leak-proof tape or products with the same function.
- 7) The cables connecting the lights and the transformers must be at least 6mm² and the distance between them must not exceed 30m (Figure 2); otherwise the lights will not function properly.
- 8) Terminal blocks must meet the IEC60988-2-1 standard having the rated connecting capacity of 4,0mm² use of screw-type terminal at least 25A rated current, mounted on junction boxes inside. See Figure 3.

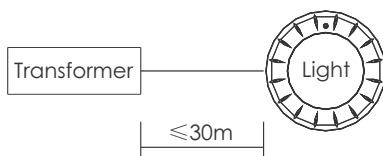


Figure 2

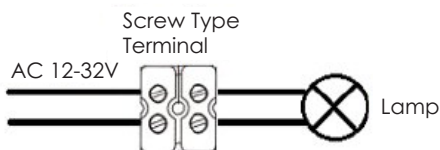
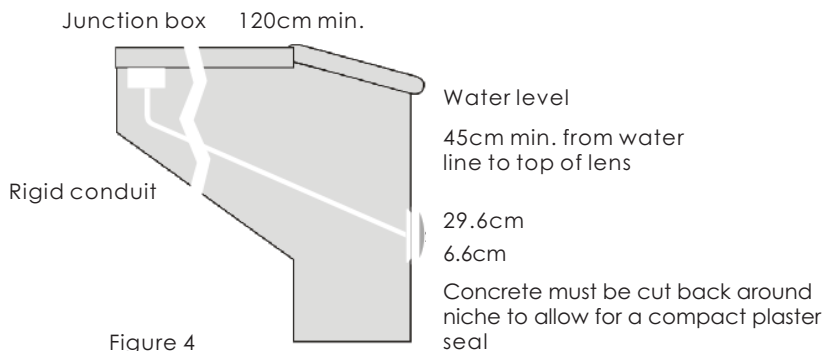


Figure 3

INSATALLATION

A) Preparing to Install

- 1) Before installation, the circuit system diagram must be checked
- 2) The circuit system must comply with local laws and regulations and must be carried out by qualified electricians.
- 3) Make sure the voltage is 12-32V and the terminal box is at least 120cm from the poolside (Figure 4).
- 4) Upon installation, the top of the light must be at least 45cm from water surface (Figure 4).
- 5) Switch off the Pool lighting system power.



B) Installation guide of retrofit connector

- 1) Unscrew the existing light and pull out from the pool.
- 2) Remove the existing cable as close to the light as possible to reserve enough length for replacement light.
- 3) Remove the power cable coating, recommended length. Figure 5
- 4) Assemble retrofit connector: First, insert the cable through Nut, Washer and Base in order (Note: there are five various sized stoppers depending on cable thickness), Connector housing: Add two sizes of O-Ring to connector housing, and insert two copper pins to the connector Internal, the power cable is inserted through copper pins and held tight by the screws. Pull the cable back and tighten nut, the front face is kept flush for the connector housing and connector Internal. Figure 6



Figure 5

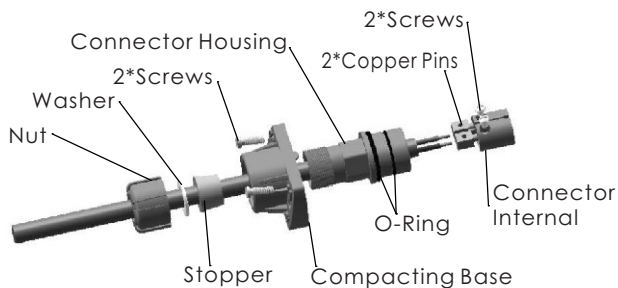


Figure 6

- 5) Insert four screws to the screw holes of the pressing base. Figure 7
- 6) Plug the connector into the light connection interface tightly and tighten the four screws. Figure 8



Figure 7

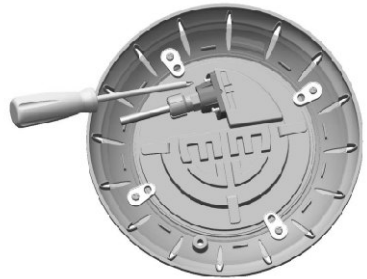
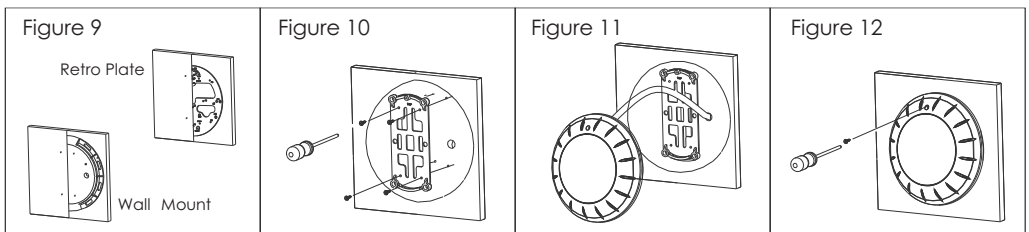


Figure 8

C) Vinyl Pool Installation and Retro-Installation

- 1) If only one Retrofit light, Attach Retro plate to the pool wall, making sure that it is parallel to the side of the pool. Or attach retro plate on other types of plates, and replace other lights. For one light with cable, embed the Wall Mount into the concrete wall. (Figure 9).
- 2) Place the mounting plate on the concrete wall and tighten it with 2 screws. The conduit must be next to the Mounting Plate (Figure 10).
- 3) Note that the light must only be installed on a flat or concave surface.
- 4) Wrap extra cables behind the light to make sure it can be taken to the pool surface for future maintenance (Figure 11).
- 5) Hang the light onto the Mounting Plate and tighten the screws (Figure 12).
- 6) The wire connections inside the terminal box must be sealed by leak-proof tape or similar to prevent water from leaking into the terminal box through the cables.

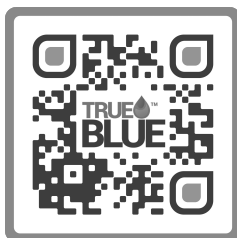


MAINTENANCE AND TROUBLE SHOOTING

- 1) Do not leave the lights "on" above water for longer than 1 minute.
- 2) Do not leave the lights directly under sunlight. Fill the pool with water as soon as possible after the lights are installed.
- 3) Before switching on the lights, check whether the lights are fully submerged underwater and the circuit boxes are running properly.
- 4) This unit does not need any kind of maintenance. If it is not working properly, please contact the authorised dealer where you purchased the unit.
- 5) Warranty will be voided if the Underwater Light was dismantled by unauthorised personnel.

Trouble	Possible Solution
The light is dim	Check voltage of transformer. Check brightness control of remote if it connects to Prism control box.
The light is not working	Check connected locations of the cable. Check fuses at switchboard. Replace light panel. Contact qualified electrician to test.
After power on , Lights up and not lit a few seconds	Check transformer. Contact qualified electrician to test.

After Sales Service:



REPLACEMENT PARTS

Item No.	Part No.	Description	Qty
1	AAA-301-91012	Screw M5*25	1
2	AAA-301-91013	Transparent face ring	1
3	AAA-301-91014	20 LEDs Panel 25W colour	1
4	AAA-301-91015	Fastener	4
5	AAA-301-91016	M4*12 Flat head self-tapping screw	4
6	AAA-301-91017	Retro-fit Connector	1
7-1	AAA-301-91018	Retro Pool Fitting	1

